

Aslag  
Digico SD-12 'HORM'



## TECHNICAL NOTE

Date 20th Jan 17 rev 3

ref 372

Raised by: TC

Distributed to: as required

Soundtracs - Digico(UK) Ltd. unit 10 Silverglade Business Park Chessington Surrey KT9 2QL England  
Tel: +44 1372 845600 Fax: +44 1372 845656 email: support@digiconsoles.com

### SD12 and other Win7e based mixers Use of HORM system and overview screen setup

#### Introduction to HORM

HORM - Hibernate Once Read Many - This is a Windows 7e function an equivalent to Ready On as used on the older SD-series consoles based on Win XPe. The functionality of this is slightly different.

In the same way as Ready On, it protects the C: Drive from unintended changes.

The method of making intended changes is quite different to the older system and is described below.

The main difference that is immediately seen between HORM and Ready-On is that there is no command line path to start an application on startup.

NOTE: This means that even with HORM disabled, the SD12 application will still start automatically and that cannot be prevented.

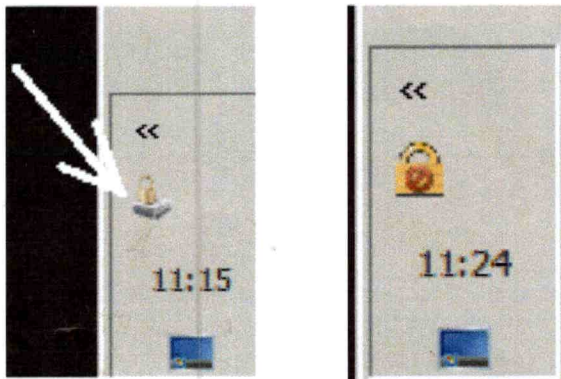
\*In the case of a corrupted startup.ses preventing the console starting up correctly, holding the SHIFT key will still offer the option of a "default start". Hold the SHIFT key as soon as you see the SD12 logo appear on the Master screen

#### Use of HORM system

The access the HORM system quit to Windows from the mixer program.

Touch "Quit to Windows" under the system button.

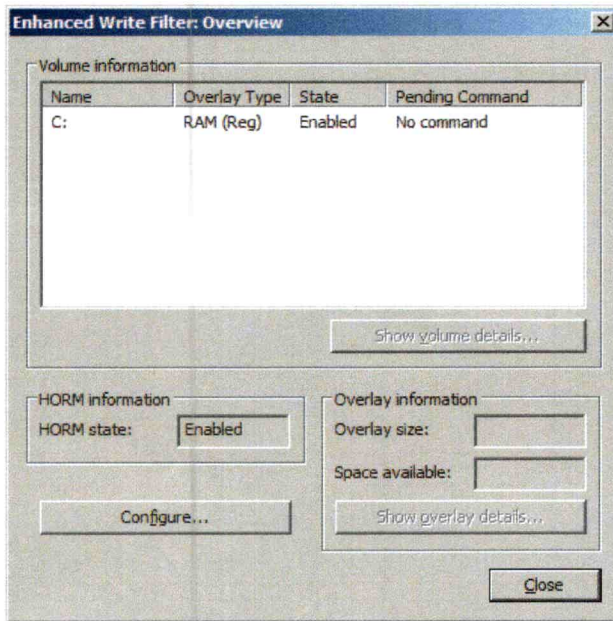
There is a small icon at the bottom of the Start Bar which is the shortcut to HORM configuration.



The left picture shows the HORM icon when active and with the drive locked (normal use) and the right picture when available but the drive is not locked.

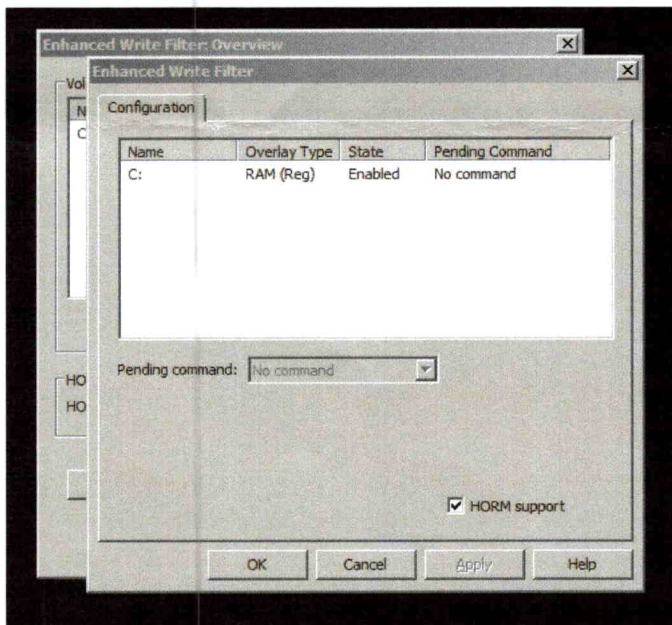
'MSOH'

Double click the HORM icon in the tool bar to open the program.  
Once open, the HORM application looks like this:



Note how the HORM status should ALWAYS be shown enabled, whether active or not.

Clicking Configure opens this:

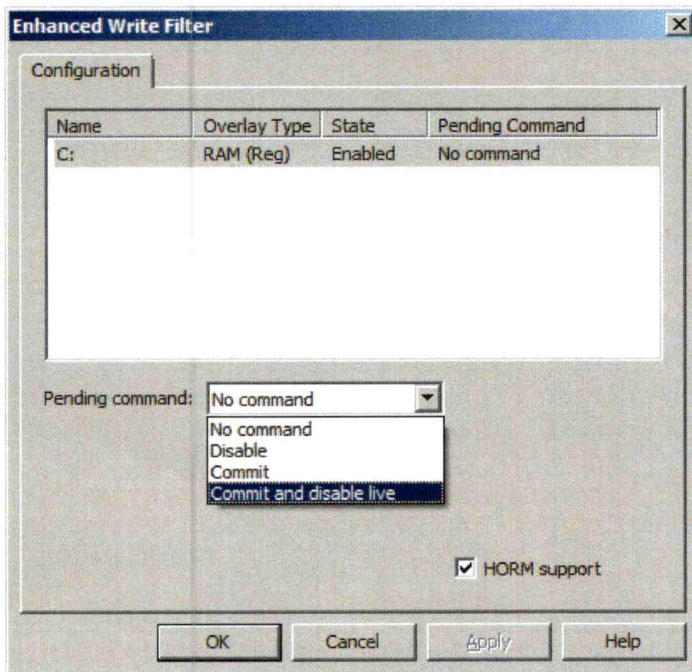


Note HORM support must ALWAYS be checked.

In order to disable protection in a mixer with protection on (the normal mode):

Click on the C: drive to highlight this

Click on the "pending command" drop down box



Select "commit and disable live" as above

Click on Apply

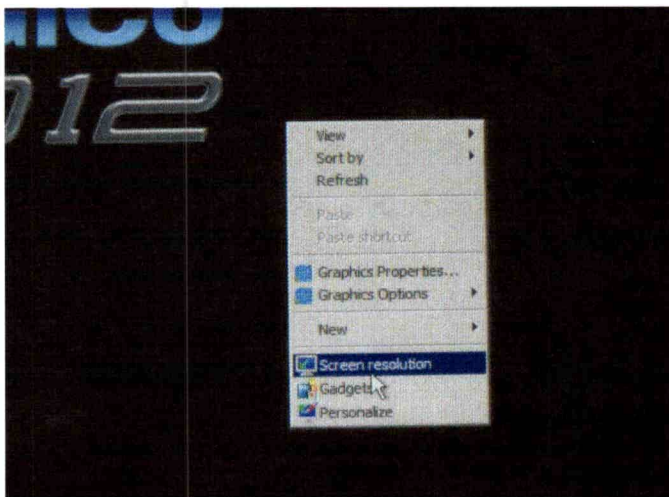
Click on OK

On the remaining Window click close.

Protection is now disabled and adjustments in the operating system can be made.

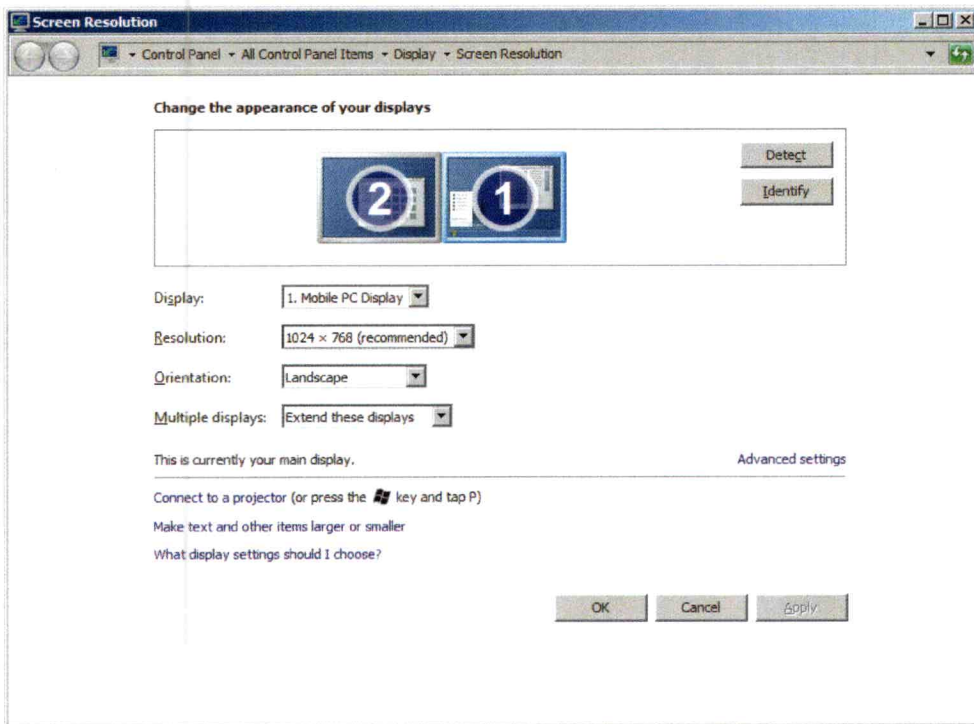
Make adjustments to the screens setup as follows.

Right click on the desktop.



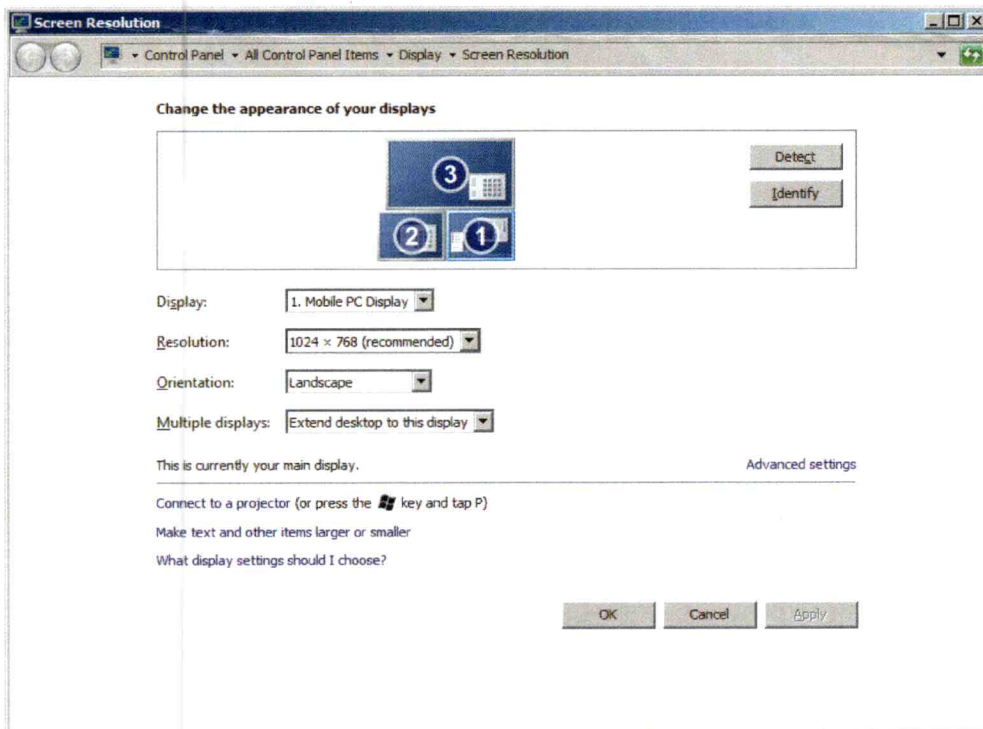
Click on screen resolution

If no overview screen is connected, see the following screen open



If only one screen indicated as 1 / 2 is shown ensure “extend these displays” is selected and the 2 screens appear as above. Use the identify feature in the normal manner for Windows. Note the automatically detected screen settings (type & resolution) should be as shown.

Now connect an overview screen or if it is already connected, see the following screen open



If the overview in use has not been connected to this mixer before, this must first be enabled. Click on monitor 3 . Click “Multiple Displays” drop down and select “extend desktop to this display”.

If the layout of screen is not as shown (2 to the left of 1 and 3 above 1 & 2) this must be set. With a new screen it will default to a horizontal spread. Use the mouse in the conventional manner to click and drag the screens so they match above. Note how the edges align. The system will detect the appropriate settings for the overview screen in use (Plug & Play operation).

When above screen(s) are correctly set up, click on apply and OK to close the window. It is possible to repeat this process with several different examples of overview screens and the operating system will detect and remember settings for each screen, so long as the HORM protection is disabled. If the same screen is used again, the setup will be recalled automatically without further adjustment. Note this applies to specific individual screens, not models or types of screen in general.

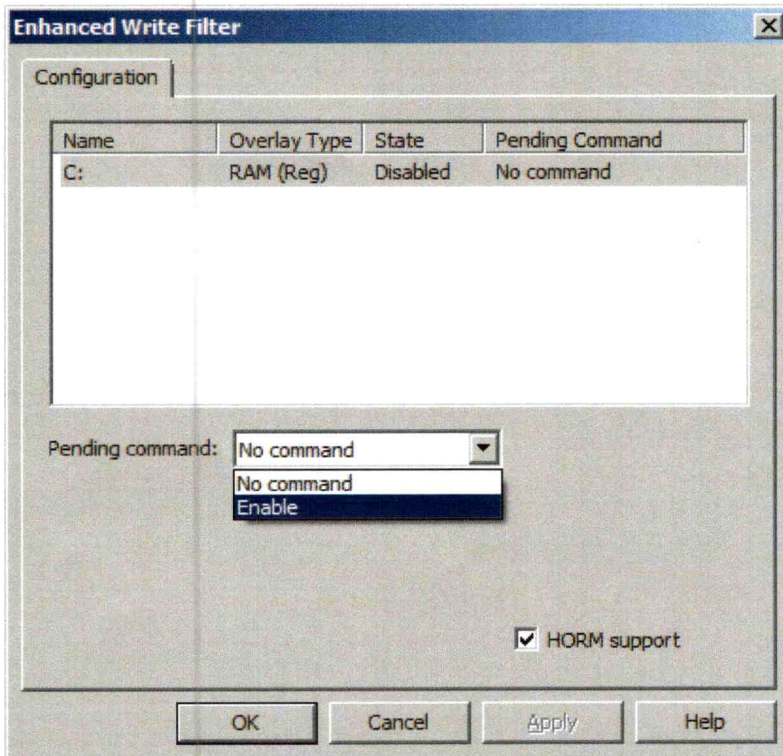
To clear the HORM system prior to re-saving and to check the settings are correctly saved, click on the start button and close Windows as normal. Power cycle the mixer.

See the mixer program start. Confirm the screens appear to work as expected. As above quit to Windows and restart the HORM program, from the tool bar icon.



Note the HORM icon should show protection is not active

See the first Window open (note how HORM is always shown enabled) Click on configure as before and see the second window open



Highlight the C: drive (note the state is now disabled)

Click on the "pending command" drop down and note different options. Select Enable

Click on Apply

Click OK

On the remaining Window click close.

To create the HORM image and correctly save, click on the start button and close Windows as normal.

Power cycle the mixer.

When it restarts the HORM "image" will be in place and the system is protected.

This can be confirmed by checking the Windows Tool Bar icon has reverted to the locked symbol