


INSTALLATION SOLUTIONS



Enabling outstanding sound in acoustically-challenging venues can be tricky but choosing the proper microphones makes everything easier. The right mics can minimize potential problems before they pop up and guarantee customer satisfaction after project close. Whatever the setting, DPA supercardioid mics combine controlled directionality with excellent rejection of background noise into an elegant mic solution for even the most difficult space.

By choosing microphones from DPA for your installation project you ensure:

- Maximum speech intelligibility regardless of acoustical environment
- High gain before feedback leading to fewer speaker placement issues
- Rejection of mobile phone interference
- Consistent sound from every microphone, every time



Stress-free solutions for AV consultants

The mic is the important first link in the sound chain and, as always, if you choose the best solutions for your audio system, your end result will sound better. DPA Microphones provides the essential tools needed to overcome the acoustic and design challenges that all AV consultants struggle with. Whether in an auditorium, board room, conference venue, courtroom, house of worship, stand-alone podium or even a theater setting, our condenser microphones secure speech intelligibility. By choosing the right mics and complementing them with the right audio system components, you can ensure that every word said will be heard – throughout the venue. No more struggling with EQ settings to compensate for bad microphone discolorations.

Depending on the surroundings and your specific needs, you can pick between a wide variety of installed mic solutions; including hanging, floor and table mounted solutions.

For more information and tips for ensuring the best possible installed sound in your space, visit: [dpamicrophones.com/installedsound](https://www.dpamicrophones.com/installedsound)

4018

Supercardioid Microphone



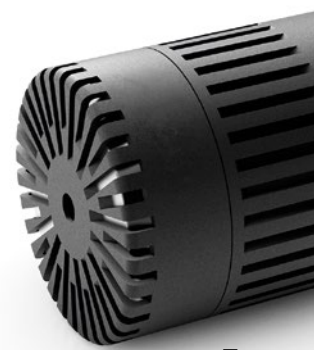
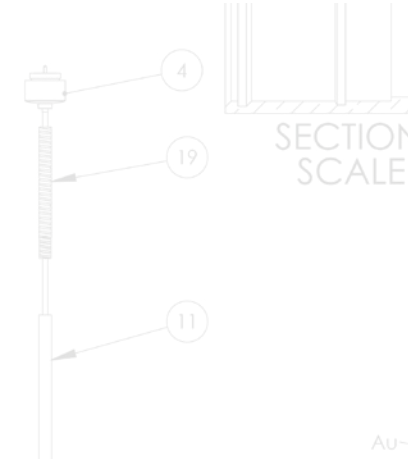
There is no other sound as recognizable as the human voice. And when an entire audience's focus is on that voice, the mic you use has to amplify it clearly, naturally and easily. The 4018 Supercardioid Microphone is the mic on the market with the most natural response to speak. No equalization is needed to remove microphone artifacts and speech intelligibility is straight out of the mic.

The highly directional supercardioid pickup pattern has a smooth and uniform off-axis frequency response. The supercardioid shape is frequency independent, securing an identical sound color around the microphone. The usual rear lobe heard on most supercardioids is minimized on this microphone making it much more isolated without sudden frequency dependent peaks and dips.

A range of solutions to meet any need

The 4018 Supercardioid Microphone is available in many variants to meet your specific needs. It comes in 22 cm (9 in) for ceiling, 35 cm (14 in) and 50 cm (20 in) for podium and 80 cm (31 in) and 125 cm (49 in) for floor stand solutions. Custom variants are also available.

We also provide a wide range of accessories like capsules, windscreens, cables, mounts, clips, floor stands and our stylish Table Shock Mount (see page 19).



4018

Supercardioid Microphone

Specifications

Directional pattern

Supercardioid

Cartridge type

Pre-polarized condenser

Effective frequency response

20 Hz - 20 kHz

Frequency range, ± 2 dB, at 30 cm (11.8 in)

40 Hz - 18 kHz

Sensitivity, nominal, ± 2 dB at 1 kHz

12 mV/Pa; -38.4 dB re. 1 V/Pa

Equivalent noise level, A-weighted

Typ. 16 dB(A) re. 20 μ Pa (max. 19 dB(A))

Distortion, THD < 1%

134 dB SPL RMS, 137 dB SPL peak

Cable drive capability

100 m (328 ft)

Power supply (for full performance)

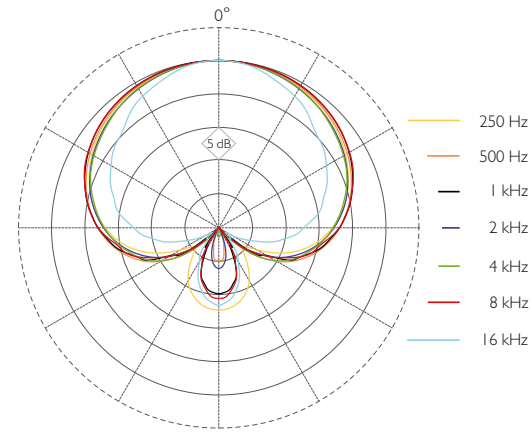
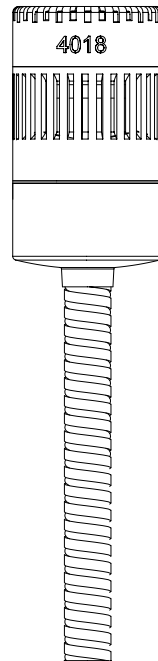
48 V Phantom power (± 4 V)

Connector

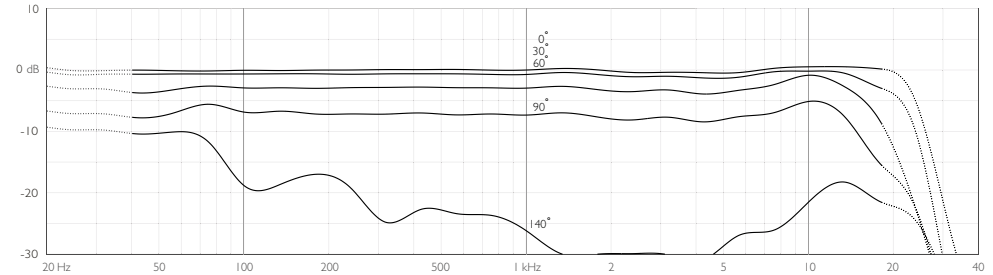
XLR-3M. Pin 1: shield, Pin 2: signal + phase, Pin 3: - phase

Color

Matte black



Typical directional characteristics of a 4018 Supercardioid Microphone.



Typical on- and off-axis response of a 4018 Supercardioid Microphone measured at 30 cm (12 in).

Connector	Color	4018 Supercardioid Microphone lengths				
		22 cm (9 in)	35 cm (14 in)	50 cm (20 in)	80 cm (31 in)	125 cm (49 in)
XLR	Matte black	✓	✓	✓	✓	✓

Length includes connector, MMC4018 capsule and foam windscreen. Other configurations can be custom ordered.

4098

Supercardioid Gooseneck Microphone



Clean, clear sound is key when a speaker is addressing a crowd. 4098 Supercardioid Gooseneck Microphones deliver high intelligibility by combining controlled directionality with rejection of background noise. These gooseneck microphones use our famous miniature mic capsules and our innovative interference tube technology.

Supercardioid microphones offer extraordinarily high speech intelligibility and clarity of voice. They provide linear, natural sound combined with elegant Scandinavian design.



Meeting the requirements of any install project, at any venue

The 4098 Supercardioid Gooseneck Microphone is available in many variants to meet your specific needs. It comes in black or white, with either an XLR or a MicroDot termination (for wireless solutions) and in lengths ranging from 16 cm (6 in) to 47 cm (18 in). Longer black variants are available in 77 cm (30 in) and 122 cm (48 in). Custom variants are also available.

We also provide a wide range of accessories like windscreens, cables, mounts, clips and floor stands. Our sleek Microphone Base (see page 19) turns the 4098 Supercardioid Gooseneck Microphone into an elegant solution for meeting rooms.

4098

Supercardioid Gooseneck Microphone

Specifications

Directional pattern

Supercardioid

Cartridge type

Pre-polarized condenser

Effective frequency response

20 Hz - 20 kHz

Frequency range, ± 2 dB, 20 cm (7.9 in)

100 Hz – 15 kHz with 3 dB soft boost at 8-15 kHz

XLR-3M: 100 Hz - 15 kHz with 3 dB soft boost at 8-15 kHz and permanent 2nd order

low-cut filter at 80 Hz

Sensitivity, nominal, ± 3 dB at 1 kHz

16 mV/Pa; -36 dB re. 1 V/Pa

Equivalent noise level, A-weighted

Typ. 23 dB(A) re. 20 μ Pa (max. 26 dB(A))

Distortion, THD < 1%

122 dB SPL RMS, 125 dB SPL peak

Cable drive capability

Up to 300 m (984 ft) with XLR connector or DAD6001 XLR Adapter

Power supply (for full performance)

MicroDot: Min. 5 V to max. 10 V through DPA adapter for wireless systems

or 48 V phantom power ± 4 V with DAD6001-BC XLR adapter

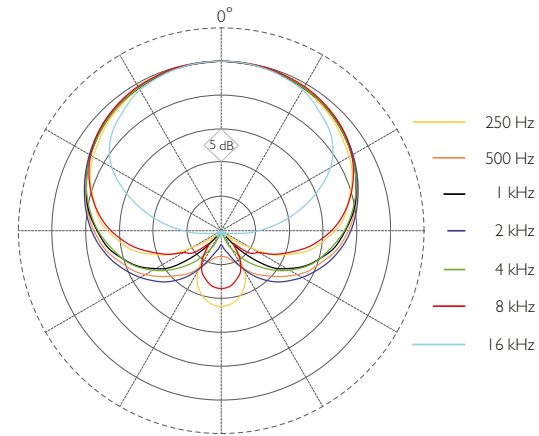
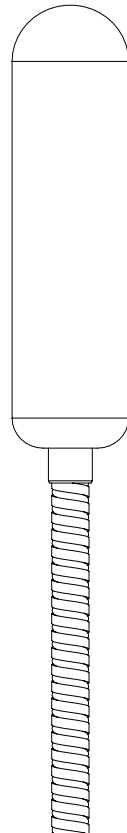
XLR-3M: 48 V phantom power ± 4 V

Color

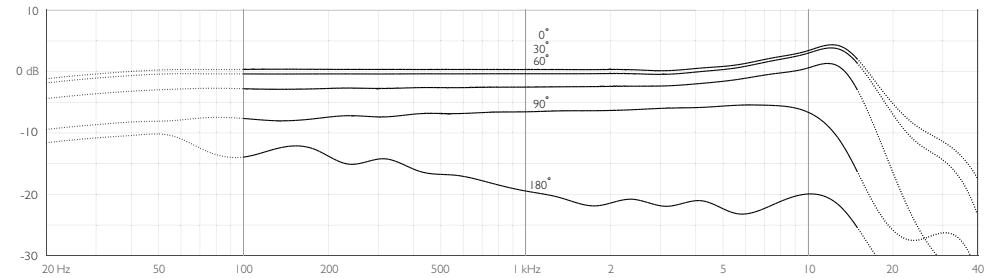
Matte Black and White

Connector

XLR-3M and MicroDot



Typical directional characteristics of a 4098 Supercardioid Gooseneck Microphone.



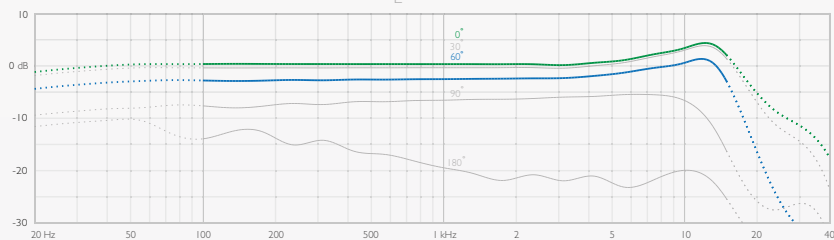
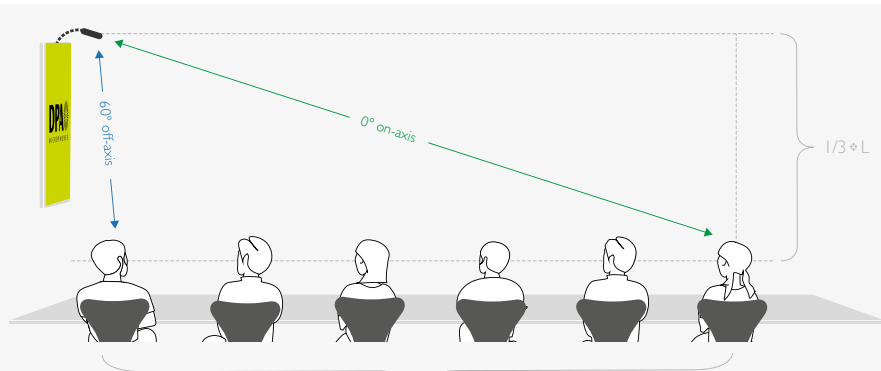
Typical on- and off-axis response of a 4098 Supercardioid Gooseneck Microphone measured at 20 cm (8 in).

Connector	Color	4098 Supercardioid Gooseneck Microphone lengths				
		16 cm (6 in)	28 cm (11 in)	43 cm (17 in)	77 cm (30 in)	122 cm (48 in)
MicroDot	Black	✓	✓	✓	✓	✓
MicroDot	White	✓	✓	✓		
		20 cm (8 in)	32 cm (13 in)	47 cm (18 in)	77 cm (30 in)	122 cm (48 in)
XLR-3M	Black	✓	✓	✓	✓	✓
XLR-3M	White	✓	✓	✓		

Length includes connector and foam windscreen. Other configurations can be custom ordered.

The 4098 Supercardioid Gooseneck Microphone, like all of DPA's directional microphones, has a specially-designed capsule that ensures a uniform off-axis frequency response, which is exceptionally important in meeting rooms. No matter who is speaking – the person closest to or farthest from the microphone – each voice is picked up at an equal level.

The image below illustrates this principle. Sound coming from directly in front of the 4098 (0°) is unimpeded, while sound coming from any other direction is damped within the capsule, resulting in the elimination of most of the off-axis sound, which means that speakers closer to the mic are picked up at a lower volume.



L = The distance between the microphone and the farthest seat at the table.
The microphone should be positioned at a height of $1/3 * L$. The microphone must be aimed at the seat farthest away.

The image above shows the placement of a 4098 Supercardioid Gooseneck Microphone above a (video-) conference table. Mounting the 4098 above the screen makes installation extremely easy and ensures all participants voices are captured at the same level and high speech intelligibility is preserved throughout the meeting room.

6066

CORE Subminiature Headset Microphone



The amazing 6066 CORE Subminiature Headsets set the standard for bodyworn headset microphone solutions. They are ideal for public speakers and sound engineers who insist on superior voice reproduction, comfort, easy setup and an unobtrusive look.

The capsule of the 6066 is just 3 mm (0.12 in) in diameter, but packs the audio power of larger, award-winning DPA mics. Despite its small size, it is abundant in clarity, consistency and durability – three qualities that truly matter. By shrinking our newly introduced CORE by DPA technology, we ensure you don't have to compromise on sound to focus on aesthetics.

The 6066 CORE Subminiature Headset mic sports a completely redesigned, lightweight, one-size-fits-all headset that attaches over the ears for maximum comfort. 3-point ear grips with spring mechanisms help grip below the ears and to the side of the head for added security. A 2-way adjustable boom system (length and height) with an anti-rotate mechanism makes this new headset very easy to fit. A new 90° cable management system safeguards the cable and directs it down the wearer's back, where it can't be seen.



reddot design award
winner 2019



4011

Cardioid Microphone



Similar to the 4018 Supercardioid Microphone, the principal appeal of the 4011 Cardioid Microphone is its directional quality. This first-order cardioid mic has a wider sound pickup pattern compared to the supercardioid variant. Choose the 4011 Cardioid Microphone when you need a microphone to pick up more than one person speaking or for situations when the speaker moves around a lot in front of the microphone.

4060

Boundary Layer Microphone



With a stylish Scandinavian design in stainless steel and black rubber, the 4060 Boundary Layer Microphone is an elegant table mic solution for any meeting room or conference application. Its omnidirectional polar pattern picks up speech all around it with excellent intelligibility due to its voice-optimized frequency response.

Users will benefit from the special characteristics of the surrounding sound field on which the mic is mounted: a 6 dB gain of direct sound and only a 3 dB gain of diffuse sound. The sound captured has both greater clarity, especially at high frequencies, and speech intelligibility compared to sound captured above the surface.

6060

CORE Omnidirectional Subminiature Microphone



The 6060 CORE Subminiature Microphone is only three millimeters in size. When used as a lavalier, a special rotatable clip is available. The 360° clip allows the lav to be mounted in eight positions, chosen in 45° incremental steps. This makes it very easy to change the mics from women's to men's shirts (left- to right-buttoned) or even t-shirts and the like where the neckline is used.

4080

Miniature Cardioid Microphone



Capturing the human voice with an unusually high degree of definition, this directional, chest-placed microphone offers maximum side rejection and excellent sonic focus on the subject. This mic solution is specifically optimized for chest placement and is easy to set up. It is ideal for conference use. It is acoustically pre-equalized, offering a 4 dB presence boost, which matches the mic's chest placement perfectly. This makes the voice more distinguishable and improves speech intelligibility. Professionals will appreciate that it is lightweight and offers excellent speech reproduction.

4097

CORE Supercardioid Choir Microphone

The 4097 CORE Supercardioid Choir Mic will suit anyone looking for a versatile floor standing mic, such as live broadcast shows. The unobtrusive, yet, balanced floor base contains an integrated shock mount solution, which helps stabilize the entire construction. Its unique design allows for a vertical pole that does not swing, but rapidly stabilizes itself after being positioned.

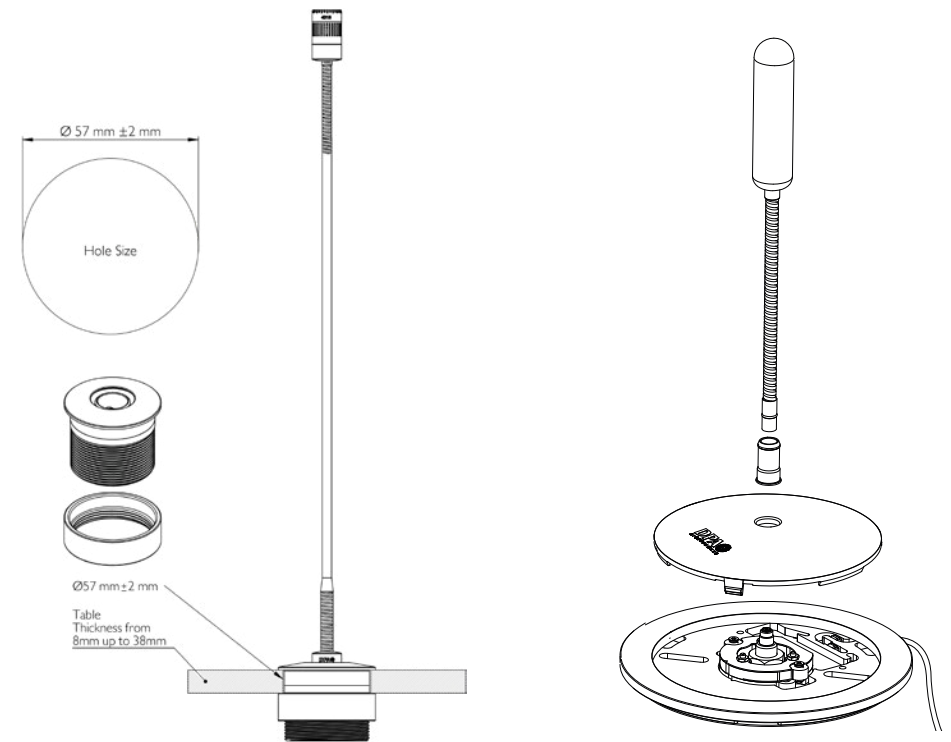
The 4097 offers a highly-directional pickup pattern as well as low self noise and high sensitivity. It is capable of handling extremely high SPL's which allows the mic to deliver undistorted natural sound. With a linear response, low distortion and an extremely large dynamic range, these mics sound great no matter how challenging the environment.



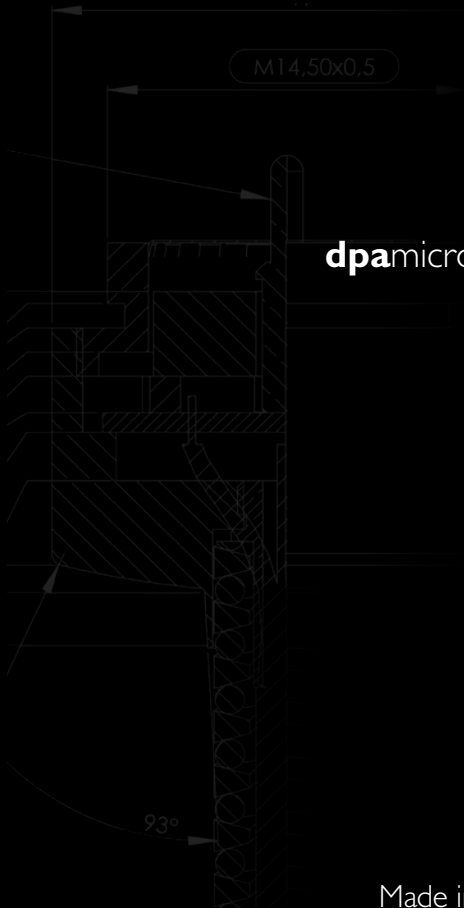
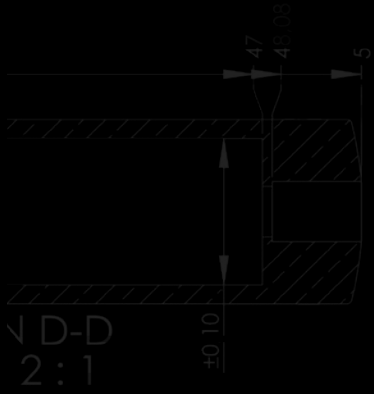
Accessories

We also provide a wide range of accessories like windscreens, cables, mounts, clips, floor stands and our stylish Table Shock Mount. It is a fixed microphone mount that offers the best shock rejection available of any integrated podium/table mount. It is optimized for the weight and dimensions of our miniature and gooseneck microphones and mic boom poles.

The Microphone Base is made specifically to work with the 4098 Gooseneck Microphone and it brings sleek Scandinavian design to meeting rooms, where it can be mounted on the ceiling or the table. It comes with a built-in shock mount system that gives very good suppression of unwanted handling noise from a table or the like. Hidden mounting holes below the top cover make it possible to permanently affix the unit to a flat surface for an exclusive appearance. The audio cables are an integral part of the Microphone Base unit.



Read more about our wide range of accessories at dpamicrophones.com



dpamicrophones.com

Made in Denmark